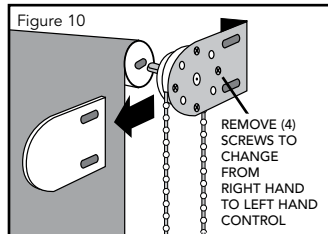


ALTERNATIVE CLUTCH SETUP



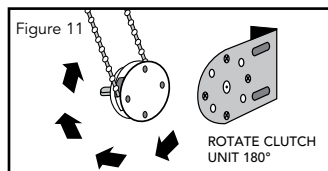
Your blind will require a non-standard installation if:

- 1) you are changing the chain to the **left side** of the shade, or
- 2) if you are mounting your shade from the **top/ceiling**.

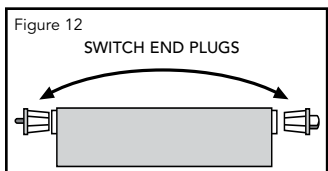
NOTE: If you purchased a Custom Blind or are doing a standard installation, you do **NOT** need to make these changes.

Changing to a Left-Hand Chain Control

If you want your chain to be on the left side of your blind, you will need to make a simple change to your Clutch Unit before you install your blind. To make this change, start by sliding off the Bracket Cover on the Clutch Unit (Fig. 10). Remove the four screws.

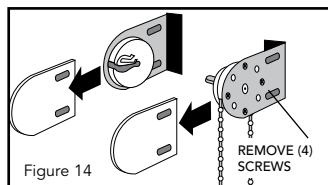
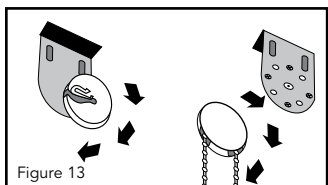


Turn the unit 180 degrees so the chain can now hang down from the left side (Fig. 11). Put the screws back in, and slide the Bracket Cover back on. No change is needed to the Idle End Unit, it works for right and left mounts. Pull out both End Plugs from the tube and switch them (Fig. 11).



Changing to a Top/Ceiling Mount

If you want your Clutch Unit to hang from the top (for example, the ceiling), you will need to make a simple change to your Clutch Unit and Idle End Unit before you install your blind. To make this change, start by sliding off the Bracket Covers on both the Clutch Unit and Idle End Unit (Fig. 13). Remove the four screws from both brackets. Turn the Clutch Unit 90 degrees so the chain hangs



straight down if the Clutch were hanging from the top, and turn the Idle End Unit so the opening is facing away from the window. (Fig. 14). Put screws back in, and slide the Bracket Cover back on.

Gale Pacific Limited Product Warranty and Limitation of Liability If, as a direct result of ultra-violet exposure, this product cracks, splits or tears ("defect") within 3 years after the date on which the product is purchased from Gale Pacific Limited ACN 082 263 778 ("Gale Pacific") or an authorised distributor or agent of Gale Pacific, will at its option, replace the fabric component of the product (but not any other component, such as the frame) free of charge or refund the cost of such replacement. This warranty is subject to the following conditions and limitations: 1. All claims under this warranty must be made in writing addressed to Gale Pacific Limited, PO Box 892 Braeside, Victoria, 3195, Australia or, if the product was purchased in North America, to Gale Pacific Inc, PO Box 161268, Altamonte Springs, Florida 32716-1268, USA. All claims must be accompanied by a sample of the fabric for laboratory testing and proof of place and date of purchase of the product. 2. Gale Pacific will not be liable for any claim made under this warranty in respect of any product in any of the following circumstances: • If the defect is contributed to or caused by any improper use of the product or usage of the product for purposes other than that for which the product was designed or intended. • If the defect occurs wholly or partly as a result of any act or omission of any person other than Gale Pacific. • If the product has been subjected to misuse, neglect, accident or abuse. • If the product is altered or modified in any way unless such modification has been approved in writing by Gale Pacific. • If the product is erected, installed or used in violation of, or in a manner that is inconsistent with, instructions or warnings furnished by Gale Pacific. 3. This warranty does not cover: • Colour fading of the product (even if due to exposure of the product to ultra-violet rays) or a deterioration in the chemical composition of the fabric due to exposure to ultra-violet rays; or • Any damage to the product caused or contributed to by exposing the product to chemicals (including chlorine), placing the product near an open flame (including flames from a barbecue), tensioning the product beyond its tear and tensile capabilities or mechanical friction. In addition to the above warranty, the Trade Practices Act 1974 (Cth) and other state and territory legislation may imply warranties or conditions or impose liability on Gale Pacific in relation to the product or its supply which cannot, or can only to a limited extent, be excluded, restricted or modified. Except for those implied warranties or conditions and such liability, and for the warranty described above: • All warranties and conditions (whether express or implied, statutory or otherwise) relating to the product or its supply are expressly excluded; and • Gale Pacific will not be liable for any loss or damage suffered by any person (including the purchaser of the product) in any way relating to or arising from the product or its use (including loss or damage arising from the negligence of, or contributed to by, Gale Pacific). If liability for breach by Gale Pacific of a warranty or condition or any other liability imposed on Gale Pacific by legislation which cannot be excluded may be limited, Gale Pacific's liability is limited to the extent permitted by law, and if liability may be limited in any one of a number of ways, Gale Pacific's liability is limited in any one of the permitted ways chosen by Gale Pacific in its absolute discretion.

BCA/GPL851

Nothing lasts like a Coolaroo



Australia Toll Free: 1800 331 521 New Zealand Toll Free: 0800 555 171 United States Ph: +1 407 333 1038
Middle East Ph: +971 4 881 7114 Europe Ph: +49 682 1920640 China Ph: +86 574 5626 8888

Coolaroo Exterior Roller Blind Installation Instructions

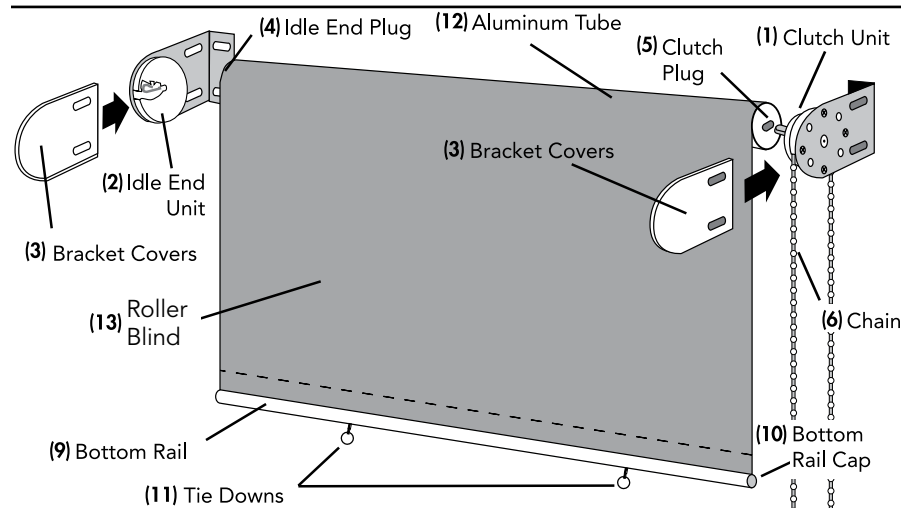


Figure 1

PARTS LIST

The following is a complete listing of the parts needed to install your Roller Blind. Please inspect before beginning installation and call us if any parts are missing.

REF. NO.	PART DESCRIPTION	QTY.	REF. NO.	PART DESCRIPTION	QTY.
1	Clutch	1	8	Timber Screws (See Fig. 2-5)	8
2	Idle End Unit	1	9	Bottom Rail	1
3	Bracket Covers	2	10	Bottom Rail Caps	2
4	Idle End Plug	1	11	Tie Downs	2
5	Clutch Plug	1	12	Aluminum Tube	1
6	Chain	1	13	Roller Blind	1
7	Tension Device (See Fig. 7)	1			

Congratulations on the purchase of your Coolaroo® Roller Blind. Please be sure to read the manual in its entirety before installing your blind. If after reading the manual you still have questions, please give us a call. We'll be happy to answer any of your questions. We hope you enjoy your Roller Blind!



96% UV Block



Saves energy



Easy installation



3 year fabric warranty against UV degradation



MADE FOR LIFE

coolaroo.com

Your blind comes standard with the chain on the right side of the shade (Fig. 1) and ready to be mounted on the inside or outside of your window. If you purchased a Custom Blind, or intend to keep your blind with the standard adjustments, you may skip this section and proceed to the installation instructions.

If you want to move the chain to the left side of the blind or you want to hang your blind from the top of the window (or ceiling), you will need to make a few simple changes to your blind before proceeding to the installation instructions. Refer to the **Alternate Clutch Setup** section of the manual for instructions on how to make these changes.

Refer to the front page of this manual for help identifying the various components of the blind.

IMPORTANT: The screws included in your hardware kit are for use with timber only. See your dealer for mounting recommendations when attaching your blind to any other material.

INSTALLATION INSTRUCTIONS

CLOTH WIDTH	SCREWS TO SCREW MEASUREMENT	TOTAL WIDTH (INSTALLED)
1.2 m	1225 mm	1260 mm
1.5 m	1525 mm	1560 mm
1.8 m	1825 mm	1860 mm
2.1 m	2125 mm	2160 mm
2.4 m	2425 mm	2460 mm

Figure 2 (the above measurements are for stock shades)

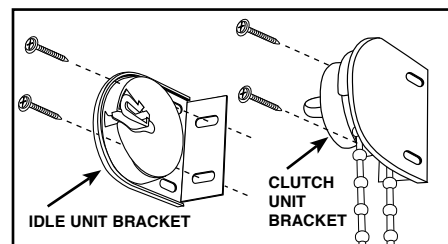


Figure 3

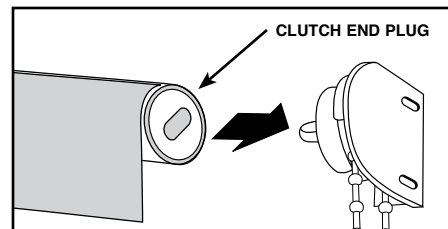


Figure 4

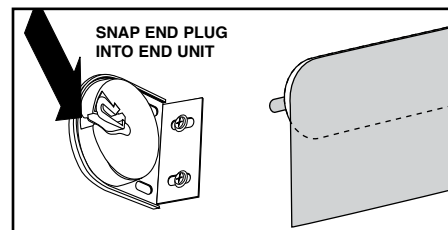


Figure 5

1. Mark the Holes

The first step is to mark the holes where you are going to put your four screws. Use (Fig 2) to determine how far apart your holes should be. For Custom Blinds mark holes 15 mm less than bracket to bracket measurement.

2. Install Brackets

Install the Clutch and Idle End Brackets (Fig 3). The Clutch Unit Bracket will be on the right side, and the Idle End Unit Bracket should be on the left for standard installation.

Do not tighten screws completely yet.

3. Install the Blind

First, insert the Clutch Plug into the Clutch Unit (Fig. 4).

Then insert the Idle End Plug into the Idle End Unit, and snap the Idle End Plug securely into place (Fig. 5).

With the blind in place, adjust the brackets so they fit snugly on each end of the blind.

IMPORTANT:

Now go back and tighten the Bracket screws completely.



Figure 6

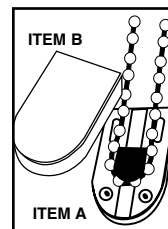


Figure 7

4. Install Tension Device

The Tension Device reduces potential hazards associated with having a loose chain hanging from the blind (Fig. 6).

Feed the chain through the pulley guide in the Tension Device Base (Item A). Position the Tension Device Base on a flat surface (window frame, wall, etc.) so that the chain and Tension Device Base do not interfere with the raising and lowering of the blind. The chain must be taut, but still operable.

Do not allow for any slack. Do not twist, cross or slant the chain. Mark the position.

Use the screws provided to attach the Tension Device Base into place.

Click the Tension Device Cover in place. (Item B)

Warning:

Blind cords may create a strangulation hazard for young children.
KEEP BLIND CORDS OUT OF REACH OF YOUNG CHILDREN.

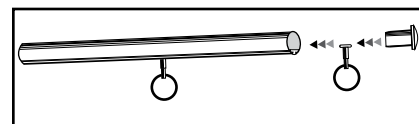


Figure 8

5. Install Tie Downs (IF DESIRED)

Tie Downs have been provided to secure your Roller Blind in mild to moderate wind conditions.

NOTE: If you choose to use the Tie Downs, you will need to install something to anchor them to, such as u-shaped hooks, s-shaped hooks, or screws. In severe wind or prolonged exposure to wind, your Roller Blind should be rolled up to prevent damage.

First, remove the End Caps from either end of the Bottom Rail. Then, slide the Tie Downs into the channel/groove (Fig. 8). Reinstall the End Cap.

You are now ready to enjoy the many benefits of your Roller Blind.

ADJUSTING CHAIN TENSION

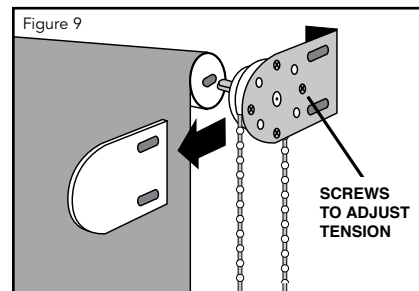


Figure 9

You can adjust chain tension if needed.

If chain tension is too tight (chain is difficult to pull), slide off bracket cover and loosen four (4) screws; turn counter clockwise. See (Fig. 9)

If chain tension is too loose (chain pulls too easily), slide off bracket cover and tighten four (4) screws; turn clockwise. See (Fig. 9)

Maintenance

Your Roller Blind has been made of the finest materials and, when properly cared for, will last a very long time. To clean your blind, simply rinse with water, scrub with soap or any non-abrasive cleaner, rinse and allow to dry. Call us for missing parts or mechanical problems. Do not store blind wet. In moist areas roll blind down frequently to air dry.

Caution: Use of solvents or abrasive cleaners may damage the fabric and will void your warranty. Do not use bleach.